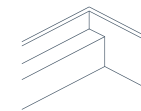


The Escape

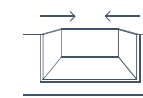
The Escape beckons as a haven where the pressures of modern living dissolve.

This masterfully crafted plunge pool transcends its dimensions, providing dual entry points and cascading steps that create a gentle transition into the water, as if stepping into a hidden dimension of serenity. The full-length bench seat invites you to unwind, where you will be enveloped in tranquility. Additionally, this plunge pool fosters an unobstructed swimming corridor, providing ample room for a seamless and uninterrupted swimming experience.

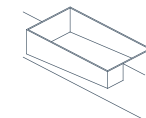
With these features, The Escape whispers promises of respite, a sanctuary where one can momentarily break away from the relentless rhythm of life.



Bench Seat



Plunge Pool



Sloped Pool Floor

Sizes

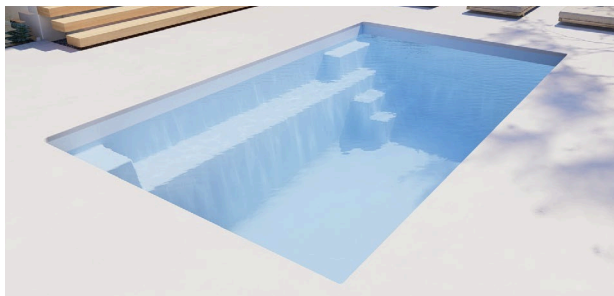
5.00m (L) x 3.20m (W) | Min Depth 1.10m • Max Depth 1.50m

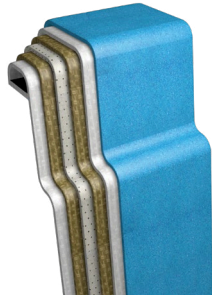
6.10m (L) x 3.20m (W) | Min Depth 1.10m • Max Depth 1.60m

Size Note: Dimensions are of the pool shell only and may be rounded.



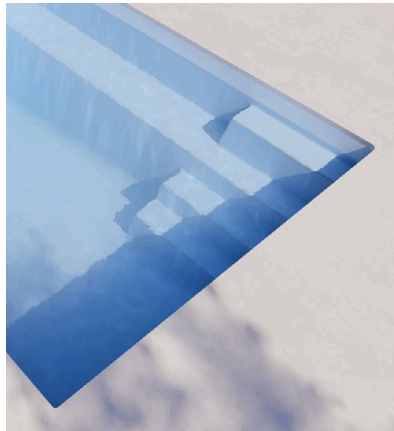
Presented in Stardust





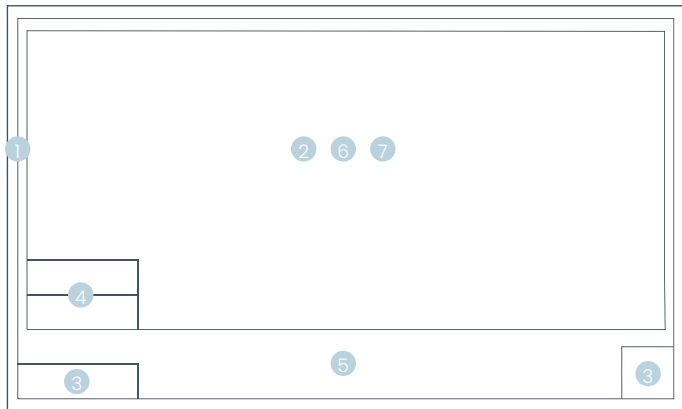
Materials

Nexus Pools are built using high-performance, corrosive-resistant vinyl ester resin within all layers of application, providing the highest level of structural integrity and protection against osmosis. We stand behind our products 100% and offer an industry-leading Lifetime Structural Warranty and a Lifetime Structural Osmosis Warranty.



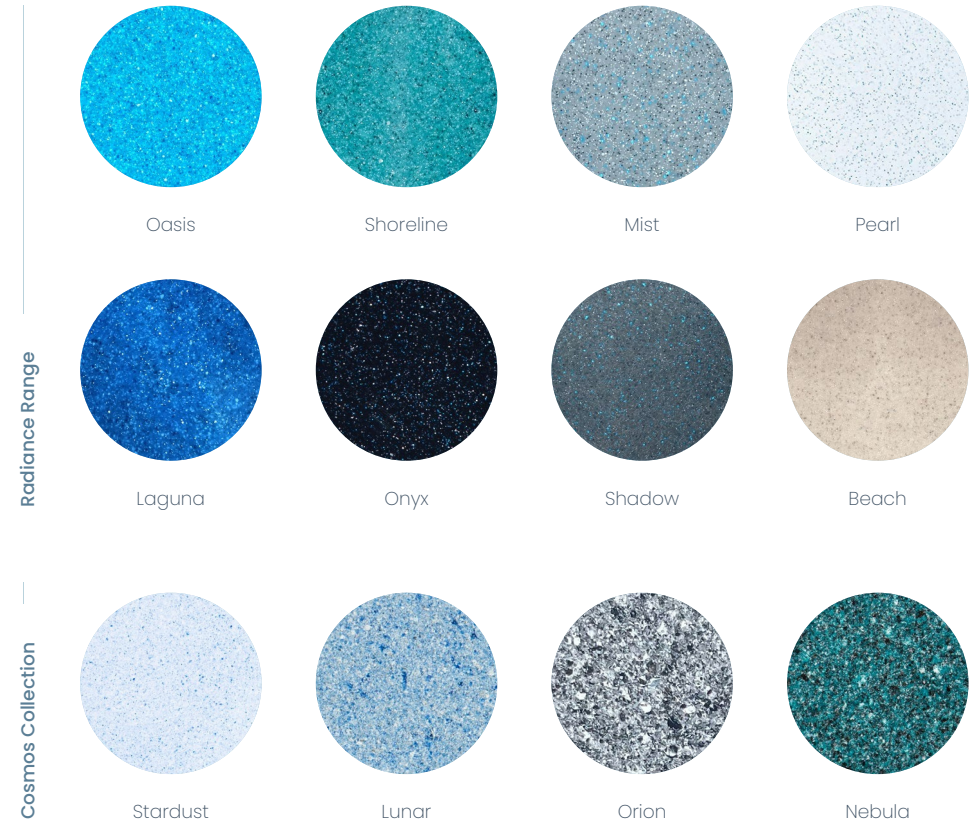
Pool Features

- 1 Wrap-around Safety Ledge
- 2 Sloping Pool Floor
- 3 Dual Entry Steps
- 4 Steps into Pool
- 5 Full Length Bench Seat
- 6 Swimming Corridor
- 7 Plunge Pool



Colour Range

Featuring industry leading colour technology from allnex, Nexus Pools' colour selection will set the tone in capturing memories and enhancing special life moments.



Colour Note: Colours are examples and are artist impressions only. Colours may vary from the finished product.

Connect With Us

To learn more about the Nexus Pools range, contact your authorised dealership today!

nexuspoolsgcc.com.au

